

TINSMED

Making sense of the data behind modern medicine.

We don't produce reports. We produce understanding.

THE PROBLEM

Biology now produces more data than anyone can read.

Modern medicine reads vast amounts of biological data - your DNA and the activity inside your cells. Turning that flood of data into a clear answer is where most teams get stuck.



Too much data, too few experts

The volume exploded. Most analysis tools were never built for biology at this scale.



Reports, not answers

Companies get back files and charts, but not what those results actually mean.



The seniors don't do the work

Senior scientists scope the project; the analysis is handed to junior people.

OUR SOLUTION

We're the expert team companies hire to **make sense of it.**

TINSMED is a research partner - a **contract research organization (CRO)**. Biotech companies, hospitals and universities send us their biological data. Our senior scientists analyze it and tell them what it means (i.e., clearly enough to act on).



Senior scientists on every project

A PhD runs your analysis and stands behind the result; not a black box, not a junior.



Custom analysis, not templates

Real biology needs tailored work. We build the analysis around your question.



Answers you can act on

We hand back understanding and a recommendation, not just a pile of files.

THE TEAM

Trained at the world's **best universities.**



Dr. Mihai Miclăuș

Chief Scientific Officer

Rutgers · University of Bern · QIAGEN.
Reads all the biological data together to
find the story.



Dana Balmuş

Chief Technology Officer

Cornell University. 20+ years building
enterprise software; turns the science into
reliable systems.



Prof. Gabriel Balmuş

Chairman

University of Cambridge. Co-founded
Adrestia — acquired by Insmid in 2023 —
and FunctionRx.

Plus **4 in-house scientists** and **1 platform engineer** · advisors from ETH Zurich, University of Toronto & Cambridge.

THE MARKET

A \$15 billion market, growing fast.



\$15B+

Size of the market today



~13%

Growth, every single year



EU + USA

Where our clients are

Why now? Every new drug and diagnostic depends on this data, and the demand for people who can actually interpret it is far outstripping the supply.

HOW WE MAKE MONEY

One model: we do the research, **on contract.**



Clients hire us for a defined project - with an agreed scope, timeline and price. We do the analysis and deliver the answers. Simple, predictable, repeatable.

WHO HIRES US



Biotech companies

Deep biology, no in-house analysis bench.



Other CROs

We're the science partner behind their service.



Universities & institutes

Multi-site research projects and consortia.



Hospitals & clinical labs

Rare-disease, diagnostics and gene-therapy work.

TRACTION

Real science, real partners, **real funding.**



2025

Published

A flagship study, peer-reviewed and out in the literature - the science is validated.



Ongoing

Flagship project

A major project running right now that showcases what we can do end-to-end (target journal: Science).



2026

€2.3M EU project

An EU Health Programme grant; our institute leads, TINSMED is the commercial partner.

WHY CLIENTS CHOOSE US

The quality of the West, without the **Western price.**



vs. big US / UK labs

Same scientific depth and quality, at a meaningfully lower cost.



vs. cheap analysis shops

Real scientists who understand novel biology, not a one-size-fits-all pipeline.

Where we're going — next 12–18 months.

1 Q3 '26

Grow the team

Add 5 more senior scientists & engineers.

2 Q4 '26

First retainer client

Lock in our first long-term, reserved-capacity partner.

3 Q1 '27

Double our output

Take on twice as many projects with the bigger team.

4 Q2 '27

Into the clinic

Expand into clinical and diagnostics projects.

THE ASK

What we'd love from **this room**.



Conversations

Got a biological-data question and don't know who to hand it to? That's us. Let's talk.



Introductions

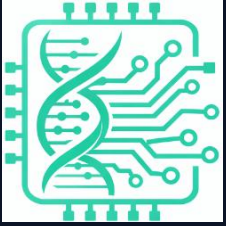
Know a biotech, lab or hospital that needs senior-led analysis? We grow through warm intros.



Co-development

Clinical platforms, rare-disease diagnostics - we're open to building together.

No financial ask today. Just conversations.



**We don't produce reports.
We produce **understanding.****

Dr. Mihai Miclăuș, Chief Scientific Officer

miclaus@tinsmed.ro · <https://tinsmed.ro/>

Thank you — let's talk.